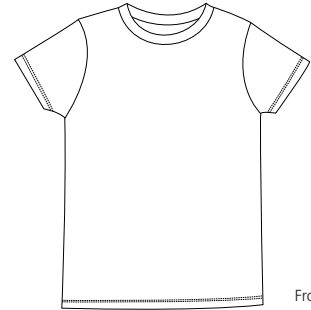
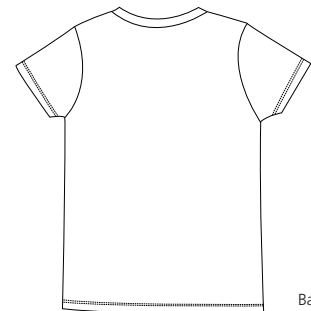


# Ladies Short Sleeve Perfect Weight District Tee



Front



Back

## DT200

- \* 3.69-ounce \* 100% ring spun combed cotton \* 40-singles \* Preshrunk \* Colorfast
- \* Fine knit softness \* Slimmer cut through body and sleeves

**Care Instructions:**  
Machine wash cold, wash inside out, wash with like colors. Do not bleach. Tumble dry low. Warm iron if necessary.

Finished Measurements in Inches							
Size	S	M	L	XL	XXL	Plus 1X	Plus 2X
Chest	15.5	16.5	17.5	18.5	19.5	20.5	21.5
Body Length	25	26	27	28	29	30	31
Sleeve	6	6.25	6.5	6.75	7	7.25	7.25
Neck Width	6.75	7	7.25	7.5	7.75	8	8.25

Chest width measured 1" below armhole. Body length measure from high point shoulder to hem. Sleeve length measured from shoulder seam to hem.

## Colors

- Bright White
- Charcoal
- Classic Red
- Clean Denim
- DarkFuschia
- Espresso
- Fresh Fatigue
- Heathered Deep Red
- Jet Black
- Lilac
- Maritime Blue
- Navy
- Thyme

**Please Note:**  
Colors shown are approximate and for reference only. For closest match see PMS colors, or for exact match, returnable samples and grommited samples are available.

Color Chart							
Colors	Bright White	Charcoal	Classic Red	Clean Denim	Dark Fuschia	Espresso	Fresh Fatigue
Textile PMS	11-0601TC	No Match	19-1664TC	No Match	17-2031TC	19-1314TC	17-0210TC
General PMS	No Match	No Match	186C	No Match	7424C	4975C	No Match
Colors	Heathered Deep Red	Jet Black	Lilac	Maritime Blue	Deep Navy	Thyme	
Textile PMS	No Match	19-4203TC	No Match	19-4203TC	19-4010TC	No Match	
General PMS	No Match	Process Black	No Match	No Match	532C	No Match	